



DX60-9 Mini Used Doosan Excavator Dealer 6 Ton

Our Product Introduction

Basic Information

- Place of Origin: Korea
- Brand Name: Doosan
- Model Number: DX60-9
- Minimum Order Quantity: 1 Set
- Price: USD 12000-18000 /Set
- Packaging Details: Container, Bulk
- Delivery Time: 3-7Work Days
- Payment Terms: L/C, D/A, D/P, T/T, Western Union, MoneyGram
- Supply Ability: About 100 units are supplied every month



Product Specification

- The Brand: Doosan
- The Model: DX60-9
- Engine Power: 41.2 KW (55 Hp)
- Arm Digging Force: 28.4 KN (6,376 Lb)
- Classification: Mini Excavator
- Moving Type: Hydraulic Crawler Excavator
- Rear End Turning Radius: 1650mm
- Total Transportation Length: 5850mm
- Total Transport Width: 2000mm
- Maximum Digging Height: 5780mm
- Highlight: **DX60 Used Doosan Excavator,
6 Ton Used Doosan Excavator,
Mini used excavator dealer**

for more products please visit us on used-excavatormachine.com

Product Description

Used Doosan DX60-9 Excavator With Adjustable Boom And Arm Mini 6 Ton

Product Description:

The Doosan DX60-9C is designed for use in a variety of applications, including construction, landscaping, and agriculture. It is known for its compact size, maneuverability, and efficiency, and features advanced technologies for improved performance and reliability. The operator's cab is spacious and comfortable, with ergonomic controls and excellent visibility.

Product Details:

Weight: 6100kg
Brand: Doosan
The Model: DX60-9
Bucket capacity (m³): 0.21
Climbing ability (%): 30
Bucket digging force (kN): 4.4/2.9
Minimum ground clearance (mm): 400
Rear end turning radius (mm): 1650
Total transportation length (mm): 5850
Total transport width (mm): 2000
Total transportation height (mm): 2580
Maximum unloading height (mm): 4060
Maximum digging height (mm): 5780
Maximum digging depth (mm): 3820
Maximum digging radius (mm): 6150
Bulldozer width × height (mm): 2000*350

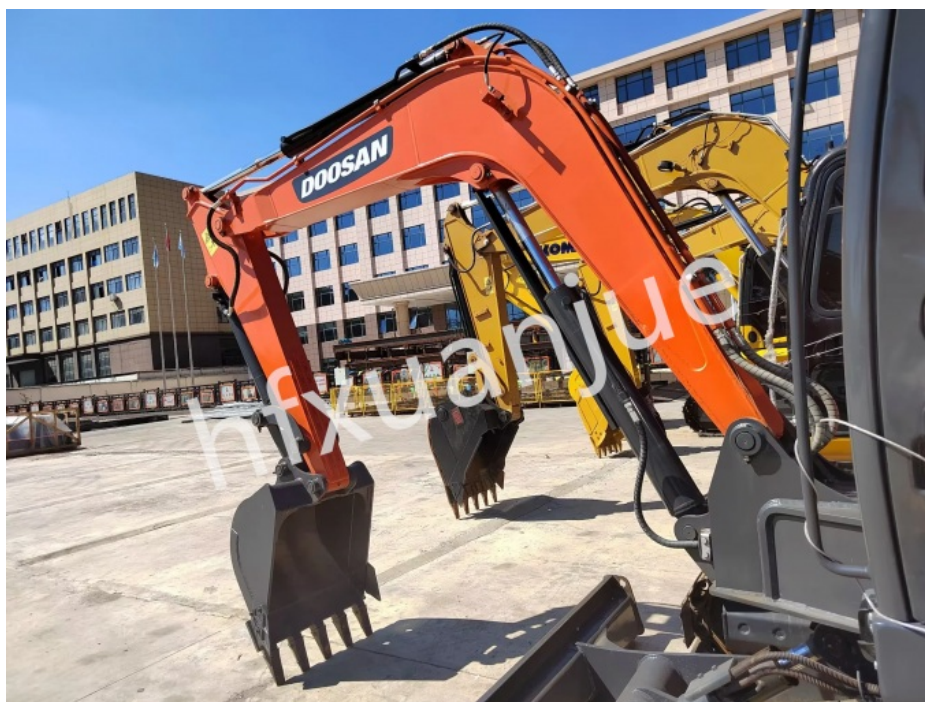
Advantage:

- 1, Strong power: equipped with a high-power electronically controlled direct injection engine, which improves the equipment's adaptability to harsh oil products and working conditions, and achieves maximum benefits for customers.
- 2, Stable performance: It follows the DX series luxury cab and is equipped with original hammer pipeline and oil suction pump. It travels slowly and powerfully, rotates powerfully, and is relatively stable during work.
- 3, Strong adaptability: The working weight is 5700 kg, the bucket capacity is 0.21 cubic meters, and the emission standard is National III, which can adapt to the needs of different working conditions.

Gallery:







Packing&Shipping:



F & Q

Xuanjue Serve For You, Best Quality And Lowest Price

Q1. What payment method?

Payment is negotiable.

Q2. Will our company provide any service to the machine?

Yes! Before we deliver the machine, we will test, check, service, maintenance and clean it the machine.

Q3. What's the MOQ ?

MOQ is 1set. FOB or others can be negotiated.

Q4. What's the payment terms?

FOB or others can be negotiated.

Q5. Who pays the freight?

This is determined based on the payment method. We can either find a freight forwarder or the customer can designate a freight forwarder.

If you have any questions, you can call and send an email at any time and leave a message. We will answer you as soon as possible after seeing it.



Hefei Xuanjue Construction Machinery Co., Ltd.



13385604601



used-excavatormachine.com

Sanshitou, Xinzhan District, Feidong County, Hefei City, Anhui Province, China